



# Daily Programme.

Welcome aboard, Captain Andrew Hall, his officers and crew, welcome all guests embarking today. We wish you a pleasant journey and relaxing voyage on board Queen Victoria.



## Master.

Captain Andrew Hall

## Deck Department.

Deputy Captain.....Martyn Sharples  
Safety Officer.....Davide Rocca  
Security Officer.....Matthew Waplington  
First Officer.....Scott Fenton  
Environmental Officer...Velsford Fernandes

## Technical Department.

Chief Engineer.....Jon Cammish  
Staff Chief Engineer.....Antonio Busic  
Ship's Services Engineer.....Nicholas Phillips  
Chief Electrical Officer.....Sasa Visnic

## Medical Department.

Senior Doctor.....Dr. Joanne Gordon  
Medical Officer.....Dr. Kash Javaid  
Senior Nurse.....James Greenwood

## Hotel Department.

Hotel General Manager.....James Cusick  
HR Manager.....Carola Poertner  
Food & Beverage Manager.....Bernhard Fischer  
Food & Beverage Services Manager.....Wendy Michel  
Executive Chef.....Chitra Bahadur Kunwar  
Senior Maitre D'.....Sandro Ranieri  
Bars Manager.....Marco Lucas  
Hotel Operations & Retail Manager.....Neil Coleman  
Customer Services Manager.....Henry Wasserfall  
Night Duty Manager.....Callum Williams  
Housekeeping Manager.....Roz Old  
Entertainment Director.....Sally Sagoe  
Production Manager.....Lewis Cook  
Social Hostess.....Ruth Sadler  
Shore Excursions Manager.....Susanna Capaccio  
Voyage Sales Specialists.....Laura Weston and Roxana Serban

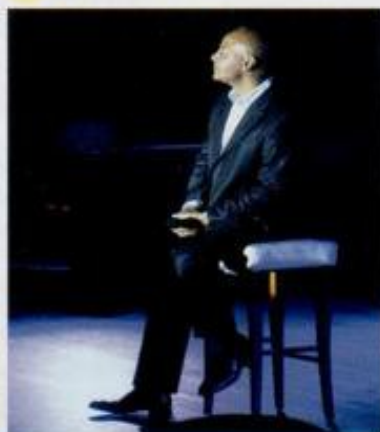
## Welcome to the Port of Barcelona, Spain.



## All Aboard Time: Sunday, 5 November, 6.30pm.

Barcelona is the capital and largest city of Catalonia and Spain's second largest city, with a population of over one and half million people (over five million in the whole province). This city, located directly on the north-eastern Mediterranean coast of Spain, has a rich history, having been under Roman, then Frank law before declaring its independence. In 1992, Barcelona gained international recognition by hosting the Olympic games which brought a massive upturn in its tourism industry. This had the effect of changing the city in ways that are still felt today with neighbourhoods renovated (and in some cases levelled) and the intense focus of modern design permeating all aspects of life in Barcelona, from public buildings to something as simple as a park bench or an event poster. For visitors, this has translated into the very modern, yet incredibly old city you see now in the twenty first century, where the new elements work to both preserve and celebrate the ancient. This beautiful city is full of what European cities are known for (outdoor markets, restaurants, shops, museums and churches) and is fantastic for walking with an extensive and reliable Metro system for more far-flung destinations. The core centre of town, focused around the Ciutat Vella ("Old City") provides days of enjoyment for those looking to experience the life of Barcelona while the beaches the city was built upon provide sun and relaxation during the long periods of agreeably warm weather. Welcome to Barcelona and Queen Victoria.

## Show Time Tonight. Paul Emmanuel.



Cunard is proud to present one of the UK's leading vocalists, Paul Emmanuel. Including a tribute to the music of the legendary Nat 'King' Cole. Accompanied by the Royal Court Theatre Orchestra under the musical direction of Bill Gibson. Presented by Entertainment Director, Sally Sagoe.

At 8.30pm & 10.30pm,  
Royal Court Theatre, Decks 1, 2 & 3

## Ballroom and Latin Dance Music.

Enjoy an evening of grace as you dance to up-tempo ballroom and Latin music. With the Queens Room Orchestra under the direction of Meirion Kelly featuring vocalist Brad Reynolds.



From 9.15pm, Queens Room, Deck 2

## Joker Team Trivia.

Test your general knowledge with Entertainment Hosts, Karen, Sadiki and Sarah.

At 9.45pm,  
Golden Lion Pub, Deck 2, Forward





# Shipboard information.

## A message from the Entertainment Director.

My staff and I are delighted to offer a large array of activities, stimulating lectures and entertainment. The Daily Programme provides you with all the essential information about Queen Victoria, and is delivered to your stateroom/suite every evening for the following day.



In the many bars and lounges on board you will find the company delightful and the live music enchanting. In the Golden Lion Pub enjoy the traditional British Pub atmosphere while participating in an interactive game show, karaoke or a pub quiz. The unsurpassed ocean views from the Commodore Club offer a stunning backdrop as we feature one of our resident musicians. Round off another perfect day, by taking the time to discover a unique collection of events and trade stories with like-minded travellers at the Yacht Club, where at night the sounds of your music requests will have you on your feet dancing into the early hours.

Queen Victoria's entertainment is second to none. Lavish production shows presented by the Royal Cunard Singers and Dancers as well as variety entertainers from around the world offer dazzling performances in the remarkable Royal Court Theatre spanning three decks and featuring the first theatre boxes at sea. In the signature double height Queens Room the orchestra set the tempo on one of the largest dance floors at sea.

When Samuel Cunard set out to deliver mail across the Atlantic, little did he realise that he was taking the first step towards a new standard in luxury travel. Cunard continues the tradition of style and grandeur on board Queen Victoria. We hope you enjoy your voyage with us.

Sally Sagoe - Entertainment Director

## Today in port.

Berth, Terminal C, Port Side.

## Passport information.

All guests must be in possession of their passport or European ID card when proceeding ashore in Barcelona. Please note that a copy of your passport will not suffice. All guests with a valid Schengen visa or EU residency can collect their passport shortly after the arrival announcement, once the ship receives official clearance.

## Currency exchange.

Euros (€) are available for purchase from the Purser's Office. Queen Victoria can only accept denominations that we trade in as per the company guidelines.

## Port Agent.

Transcoma Cruises.

Carrer de l'Atlàntic, 112 (Z.A.L), 08040, Barcelona.

Telephone: +(00) 34 93 344 25 03 or Mobile: +(00) 34 630 124 110

Telephone in case of an emergency: + 870 764 817 752

+ 870 764 817 755

## European Emergency Number: Dial 112

Available everywhere in the European Union, free of charge, 24/7 to reach the police, the emergency medical services or the fire brigade.



## Queen Victoria orientation.

The port side of the ship has even numbered staterooms, while the starboard side has odd numbered staterooms. Numbers begin at the front of the ship and go up the further back they are. Our stairways are lettered: A is forward, B is midships and C is aft. There are maps of the ship as well as directional signs placed near the lifts. We hope this assists you in becoming familiar with our ship.

## Dress requirements for social events.

### Daytime wear.

Stylish casual-wear, including shorts and smart jeans, is fine during the day on board, in keeping with the ship's elegant surroundings. Swimsuits, micro shorts, sarongs and gym wear should be reserved for pool-side, on deck or in the Spa and Fitness Centre, and please note that swimwear must be covered up before entering any enclosed areas.

### Evening wear.

After 6:00pm, shorts and blue or worn denim (for men and women); sandals and sleeveless tops (for men) are not considered appropriate within the ship. On formal nights, any guest wishing to dress more casually are welcome to dine in the Lido restaurants and relax in the Winter Garden, Yacht Club and on the open decks. Please do not use other areas within the ship, including The Verandah restaurant, out of respect for our fellow guests.

**Formal:** Dinner jacket, tuxedo or dark suit with a tie for gentlemen. Evening or cocktail dress for ladies.

**Informal:** Jacket required, tie optional for gentlemen. Cocktail dress, stylish separates or equivalent for ladies. No jeans or shorts.

### Planning ahead.

For guests wishing to plan ahead, the dress code is listed below. This is subject to change, check your Daily Programme for the confirmed dress code and events that will be taking place each day.

Sunday, 5 November	Informal
Monday, 6 November	Informal
Tuesday, 7 November	Formal
Wednesday, 8 November	Informal
Thursday, 9 November	Formal
Friday, 10 November	Informal
Saturday, 11 November	Formal
Sunday, 12 November	Informal

## Shuttle bus service.

There will be a continuous shuttle bus transfer service from Queen Victoria to Barcelona city centre. The drop off point is at the World Trade Centre. The first bus will depart at 8.00am. The shuttle bus transfer will take approximately 15 minutes each way and is subject to local traffic conditions. The last shuttle bus to return to Queen Victoria will be at 10.45pm. Service will resume tomorrow morning at 8.00am. We will not be able to accommodate everybody on the last bus, so we ask that you plan your day accordingly. There is no need to purchase tickets in advance as we will scan your Guest ID card when boarding. A maximum of two journeys will be charged per day; each additional journey for today will be complimentary. This service is chargeable for guests who booked Cunard Early Saver and Saver Fares. Adult Single \$6.00 per person (one way) and \$3.00 per child (one way). Guests who booked other fare types will not be charged for this shuttle bus transfer service. We anticipate queues during peak times, and so some guests may wish to consider using a local taxi to avoid waiting.

12.00pm	<b>Safety Presentation</b> To find out more about our safety procedures on board, tune in today. <b>Stateroom TV Ch. 48 (repeated continuously)</b>
12.00pm	<b>Cunard Radio Live</b> Expect the greatest hits from Motown to Rock and modern classics. <b>Stateroom TV Ch. 46 (available 24 hours a day)</b>
12.00pm	<b>Harpist Yoana Shirkova</b> <b>Grand Lobby, Deck 1, Midships, A Stairway (until 3.00pm)</b>
12.00pm	<b>Today's TV Movie Premiere: Churchill</b> 96 hours before the World War II invasion of Normandy, British Prime Minister Winston Churchill struggles with his severe reservations with Operation Overlord and his increasingly marginalised role in the war effort. Starring: Brian Cox, Miranda Richardson, John Slattery, Ella Purnell and Julian Wadham. Rated: PG. Released in 2017. Duration: 98 minutes. <b>Stateroom TV Ch. 21 (until 6.00am tomorrow)</b>
12.30pm	<b>Live Coverage Of The Premier League</b> Stoke City versus Leicester City. <b>Sport 24, Stateroom TV Ch. 39 (subject to satellite coverage)</b>



# Today's activities.

2pm

**2.00pm Today's Movie Premiere:**  
**King Arthur: Legend Of The Sword**  
Robbed of his birthright, Arthur comes up the hard way in the back alleys of the city. But once he pulls the sword from the stone, he is forced to acknowledge his true legacy - whether he likes it or not.  
Starring: Charlie Hunnam, Jude Law, Astrid Berges-Frisbey, Djimon Hounsou, Aidan Gillen and Eric Bana. Duration: 126 minutes, Rated: PG-13 and released in 2017.  
**Royal Court Theatre, Decks 1, 2 & 3, Forward, A Stairway** ↗  
**Repeated tomorrow on TV Channel 21 from noon onwards**

**2.00pm Social Bridge, Games And Whist Play**  
**Card Room, Deck 3, Midships, B Stairway (until 3.30pm)**

**2.00pm Baggo Competition** 🎯  
**Sports Area, Deck 10, B Stairway, Port Side (Adults only)**

3pm

**3.00pm Darts Competition** 🎯  
**Golden Lion Pub, Deck 2, Forward, A Stairway (Adults only)**

**3.00pm Social Shuffleboard (unhosted)**  
**Shuffleboard Court, Deck 11, A Stairway, Starboard Side (Adults only)**

**3.00pm Social Needlework And Knitting**  
**Winter Garden, Deck 9, Midships, B Stairway (unhosted)**

4pm

**4.00pm Social Table Tennis (unhosted)**  
**Table Tennis Area, Deck 9, Forward, A Stairway, Port Side (Adults only)**

**4.00pm Piano Entertainer Robin Rose**  
**Golden Lion Pub, Deck 2, Forward, A Stairway (until 4.45pm)**

**4.00pm Live Coverage Of The Premier League**  
Newcastle United versus Bournemouth.  
**Sport 24, Stateroom TV Ch. 39 (subject to satellite coverage)**

**4.30pm Friends Of Bill W.**  
**Admiral's Lounge, Deck 10, Forward, A Stairway (until 5.15pm)**

5pm

**5.00pm Guest Emergency Drill**  
Mandatory for all guests who embarked today.  
**Throughout the ship**

**5.30pm Friends Of Dorothy LGBT**  
**Commodore Club (stbd), Deck 10, Forward, A Stairway (until 6.15pm)**

6pm

**6.15pm Jazz Guitarist Emil Nikolov**  
**Grand Lobby, Deck 1, Midships, A Stairway (until 7.00pm)**

**6.30pm Live Coverage Of The Premier League**  
West Ham United versus Liverpool.  
**Sport 24, Stateroom TV Ch. 39 (subject to satellite coverage)**

7pm

**7.00pm Category Speciality**  
Will tonight's chosen category be your favourite? Join in to find out.  
**Golden Lion Pub, Deck 2, Forward, A Stairway**

**7.00pm Harpist Yoana Shirkova**  
**Winter Garden, Deck 9, Midships, B Stairway (until 7.45pm)**

**7.15pm Late Guest Emergency Drill**  
**Queens Room, Deck 2, Midships, B Stairway** ↗

**7.30pm Piano Entertainer Robin Rose**  
**Golden Lion Pub, Deck 2, Forward, A Stairway (until 8.00pm)**

**7.45pm The Imprezza Strings**  
**Outside Verandah Restaurant, Deck 2, Grand Lobby (until 8.30pm)**

**7.45pm Pre-recorded Ballroom, Latin And Sequence Dance Music**  
**Queens Room, Deck 2, Midships, B Stairway (until 8.30pm)** ↗

8pm

**8.00pm Wipeout Trivia**  
**Golden Lion Pub, Deck 2, Forward, A Stairway**

**8.30pm Show Time Tonight: Paul Emmanuel**  
**Royal Court Theatre, Decks 1, 2 & 3, Forward, A Stairway** ↗

**8.30pm Pre-recorded Ballroom And Latin Dance Music**  
**Queens Room, Deck 2, Midships, B Stairway (until 9.15pm)** ↗

**8.30pm Live Coverage Of The National Basketball Association**  
Memphis Grizzlies versus Los Angeles Clippers.  
**Sport 24, Stateroom TV Ch. 39 (subject to satellite coverage)**

8pm

**8.45pm DJ Graham's Request Express**  
**Yacht Club, Deck 10, Forward, A Stairway (until 9.15pm)**

**8.45pm Young Adults Gathering**  
This is an informal gathering for guests from 18 to 30 years of age.  
**Yacht Club, Deck 10, Forward, A Stairway (until 9.15pm)**

9pm

**9.00pm Jazz Guitarist Emil Nikolov**  
**Winter Garden, Deck 9, Midships, B Stairway (until 9.45pm)**

**9.00pm Piano Entertainer Robin Rose**  
**Golden Lion Pub, Deck 2, Forward, A Stairway (until 9.45pm)**

**9.15pm Ballroom And Latin Dance Music**  
With the Queens Room Orchestra.  
**Queens Room, Deck 2, Midships, B Stairway (until 12.00am)** ↗

**9.15pm DJ Graham's Request Express**  
**Yacht Club, Deck 10, Forward, A Stairway (until 10.00pm)**

**9.15pm The Imprezza Strings**  
**Outside Verandah Restaurant, Deck 2, Grand Lobby (until 10.00pm)**

**9.45pm Joker Team Trivia**  
Test your general knowledge with Entertainment Hosts, Karen, Sadiki and Sarah.  
**Golden Lion Pub, Deck 2, Forward, A Stairway (until 10.30pm)**

10pm

**10.00pm International Party Band Changez**  
**Yacht Club, Deck 10, Forward, A Stairway (until 11.00pm)**

**10.00pm Jazz Guitarist Emil Nikolov**  
**Winter Garden, Deck 9, Midships, B Stairway (until 10.45pm)**

**10.15pm The Imprezza Strings**  
**Outside Verandah Restaurant, Deck 2, Grand Lobby (until 11.00pm)**

**10.30pm Piano Entertainer Robin Rose**  
**Golden Lion Pub, Deck 2, Forward, A Stairway (until late)**

**10.30pm Show Time Tonight: Paul Emmanuel**  
**Royal Court Theatre, Decks 1, 2 & 3, Forward, A Stairway** ↗

**10.45pm Young Adults Late Night Gathering**  
This is an informal gathering for guests from 18 to 30 years of age.  
**Yacht Club, Deck 10, Forward, A Stairway (until 11.15pm)**

11pm

**11.00pm DJ Graham's Request Express**  
**Yacht Club, Deck 10, Forward, A Stairway (until 11.30pm)**

**11.30pm International Party Band Changez**  
**Yacht Club, Deck 10, Forward, A Stairway (until 12.30am)**

12am

**12.30am Late Night Dancing With DJ Graham**  
**Yacht Club, Deck 10, Forward, A Stairway (until late)**



## WELCOME TO THE ROYAL SPA

- 12.30pm The Royal Spa Open House**  
During your tour you will receive a complimentary raffle ticket for a chance to win up to \$500 in spa treatments.  
**Royal Spa, Deck 9, Forward, A Stairway (until 9.30pm)**
- 12.30pm Welcome To The Gymnasium**  
Meet our personal trainers and enjoy a tour of the gym and equipment.  
**Royal Spa Fitness Centre, Deck 9, Forward, A Stairway (until 8.00pm)**
- 1.00pm Meet Your MediSpa Physician, Dr. Mariana Quezada MD**  
Learn more about the latest in skin rejuvenation treatments with our MediSpa specialist. Consultations are complimentary.  
**Royal Spa, Deck 9, Forward, A Stairway (until 9.00pm)**
- 1.00pm Meet Your Acupuncturist, Victoria Dong L.Ac.**  
You are invited to see how the oldest, most respected herbal system can help you eliminate pain, lose weight, alleviate anxiety and more.  
**Royal Spa, Deck 9, Forward, A Stairway (until 4.00pm)**
- 4.00pm Relieving Back Pain With Good Feet**  
**Royal Spa Fitness Centre, Deck 9, Forward, A Stairway**
- 6.00pm Fitness: Total Body Conditioning**  
**Royal Spa Fitness Centre, Deck 9, Forward, A Stairway**

## Today's Opening Hours.

### Queens Grill and Princess Grill Restaurant

Lunch.....	1.00pm to 2.30pm
Dinner.....	6.30pm to 9.00pm

### Britannia Club Restaurant

Lunch.....	Closed
Dinner.....	6.30pm to 9.00pm

### Britannia Restaurant

Lunch.....	Closed
Dinner.....	6.00pm, last order 6.30pm/8.30pm last order 9.00pm

Please note that due to the amount of requests, tables for two have been assigned according to the booking date. At the moment, all tables for two have been allocated. This is to advise all guests that the second seating is full this voyage.

### Lido Restaurant

Lunch.....	11.30am to drill
Dinner Buffet.....	6.00pm to 11.00pm
Late Snack.....	11.00pm to 2.00am

### Speciality Dining

Dial 14315 between 8.00am to 5.00pm to book or visit the Speciality Dining Restaurant during opening hours.

Smokehouse.....	6.30pm to 9.00pm
-----------------	------------------

A delicious and distinctive style of barbecuing where the meat melts in your mouth and the dry rubs add an extra depth of taste. A \$17.50 cover charge applies.

### The Verandah

Dial 14351 between 8.00am to 5.00pm to book or visit the Verandah during opening hours.

Lunch.....	Closed
Dinner.....	6.30pm to 9.00pm

Featuring contemporary Southern French and Spanish cuisine, styled with a touch of British providence. Please note that charges do apply.

### Afternoon Tea

Queens Room.....	Closed
Princess Grill Dining Room (for Grills Guests only).....	3.30pm to 4.30pm

Out of respect for our fellow guests - Short shorts, sandals and sleeveless tops (for men) are not considered appropriate attire during Afternoon Tea Time.

### Bars & Lounges

Chart Room.....	7.00am to late
Commodore Club.....	3.00pm to late
Golden Lion Pub.....	10.00am to late
Pub Lunch.....	12.00pm to 2.30pm
Lido Bar.....	10.00am to late
Midships Lounge - Gin & Fizz.....	4.00pm to late
Yacht Club.....	4.30pm to late
Winter Garden.....	9.00am to 11.00pm

### Facility Hours

Art Gallery.....	Closed
Book Shop.....	Closed
Empire Casino.....	Closed
Royal Arcade.....	Closed
Photo Gallery.....	7.00am to 9.00am & 6.00pm to 8.00pm
Internet Centre, Library, Deck 3, Midships.....	Open 24 hours
Assistance available from 9.00am to 12.00pm & 4.00pm to 7.00pm	
Library.....	9.00am to 12.00pm & 4.00pm to 7.00pm
Royal Fitness.....	6.00am to 8.00pm
Spa & Salon.....	8.00am to 10.00pm
The Zone Registration.....	2.00pm to 4.00pm
The Zone, Deck 10, Midships (2-17 Yrs).....	6.00pm to 11.00pm
Pavilion Pool (Deck 9, Stairway A) (Weather permitting).....	24 hours
Please be advised the swimming pool is not supervised	
Pavilion Jacuzzi (Deck 9, Stairway A & B).....	7.30am to 9.00pm
Lido Pool (Deck 9, Stairway C) (Weather permitting).....	24 hours
Lido Jacuzzi (Deck 9, Stairway C).....	7.30am to 9.00pm
Please be advised the swimming pool is not supervised	
iStudy/ConneXions 1, Deck 1, Grand Lobby.....	Open 24 hours
Assistance available from 8.00am to 10.00am & 4.00pm to 7.00pm	
Sports Equipment Available (open decks).....	9.00am to 8.00pm
Tour Office.....	8.00am to 10.00am & 1.00pm to 8.00pm
Voyage Sales, Deck 2, Midships.....	After drill to 7.00pm
Medical Centre.....	8.00am to 9.00am and 5.00pm to 6.00pm

Dial 911 or 999 for medical emergencies only

## Tonight's dress code: Informal - Embarkation Day only.

Jacket and tie optional for gentlemen, cocktail dress, stylish separates or equivalent for ladies. After 6.00pm, shorts and blue or worn denim (for men and women), sandals and sleeveless tops (for men) are not considered appropriate within the ship. Any guests wishing to dress more casually are welcome to dine in the Lido restaurants on deck 9 and can relax in the Winter Garden, Yacht Club and on the open decks, but should not use other areas within the ship, including The Verandah restaurant, out of respect for their fellow guests. We ask guests to refrain from wearing swimwear and dressing gowns (bathrobes) outside the spa and pool areas.

## Use of lifts.

We advise all guests to be cautious of the automated lift doors and we ask that parents do not allow unaccompanied children under the age of 12 years old to use the lifts. The lifts are not to be used in an emergency situation.

## Smoking policy.

Smoking is not permitted in staterooms, on balconies or in public areas. Designated areas of the open deck where smoking is permitted is on the starboard side of decks 3 and 10 only, please use the ashtrays that are provided in these areas. Electronic cigarettes and vaporising devices, including those which do not emit smoke, are permitted in designated areas of the open deck only. Churchill's is a lounge dedicated to cigar and pipe smokers all day.

## Restaurant seating.

Your restaurant assignment is according to the type of stateroom or suite booked. A seating card will be placed in your stateroom or suite. Any seating queries should be directed to the Maitre d'Hotel of your assigned restaurant. Britannia Restaurant and Britannia Club guests with any queries about their seating allocation should come to the Britannia Restaurant on the upper level (deck 3), aft, C stairway between 2.30pm and 4.00pm today.

## General emergency drill.

At 5.00pm, an emergency drill will be held. It is a requirement of law that after boarding the ship, all newly embarking guests must attend and be instructed in their General Emergency Stations. On commencement of this exercise, broadcasts will be made and alarm bells sounded, calling you to your assembly stations as indicated on the notice behind your stateroom door. Your guest identification card will be scanned at your assembly station to record your attendance. Please ensure all members of your party, including children, have their guest identification cards ready for scanning. Please carry your lifejacket with you, do not wear it and for safety's sake do not allow the belt to trail on the deck. The correct method of wearing a lifejacket will be demonstrated to you at the end of this muster. Prior to attending the drill, we would like to bring your attention to the safety notice on or near the back of your stateroom door, and ask that you view the safety film which is showing continuously on stateroom TV Channel 48. During this exercise many services will cease. We apologise for any resulting delay in resuming the ship's services.

## Spanish IVA (VAT).

Spanish IVA (VAT) at a rate of 10% is payable on all bar charges, select dining cover charges and room service charges whilst our ships are located within 12 nautical miles in Spanish territorial waters (i.e. during the times when we are entering and exiting Spanish ports as well as the time we are alongside in Spanish ports). Prices displayed in our bars, restaurants and room service menus are exclusive of this tax, therefore an additional 10% will be added to all bar charges, select dining cover charges and room service charges whilst our ships are in Spanish territorial waters. The Spanish IVA (VAT) element will be itemised separately on your receipt.

## Security and safety ashore.

Whilst we do not wish to restrict your movements ashore today and in our upcoming ports, we do suggest taking the following precautions:

- Do not stray from the main tourist areas.
- Do not wear any jewellery that is likely to attract attention.
- Gentlemen should not carry their wallets in their back pockets and ladies should have their handbags zipped and close to them at all times, ensuring that your personal items are secure and not visible or accessible to pickpockets.
- We advise you to be extremely careful if you are taking any high value items, including cameras ashore.
- Maintain an awareness of your surroundings.
- Please be extra vigilant if approached by strangers.